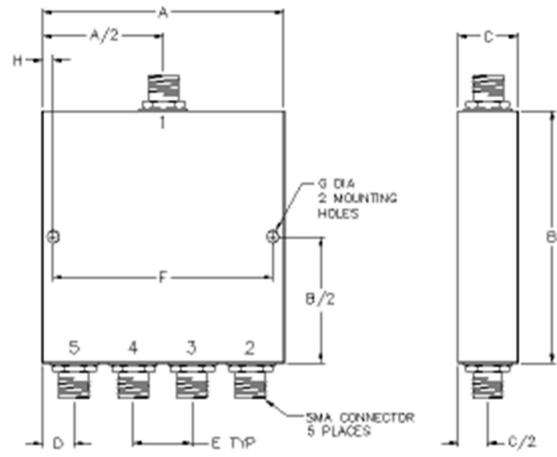


POWER DIVIDERS: 4 WAYS

P/N	FREQUENCY RANGE (GHz)	INSERTION LOSS (dB Max.)	ISOLATION (dB Min.)	VSWR (dB MAX.)	AMP. BALANCE +/- dB Max.	PHASE BALANCE +/- Degrees Max.	OUTLINE NUMBER
PD4-0.47-0.87-30	0.47-0.87	0.9	22	1.45:1/1.30:1	0.3	5.0	PD4-2
PD4-0.88-0.96-100	0.880-960	0.7	20	1.40:1/1.30:1	0.4	10.0	PD4-2
PD4-0.5-1-30	0.5-1.0	0.9	22	1.45:1/1.30:1	0.3	5.0	PD4-2
PD4-1-2-30	1.0-2.0	0.8	20	1.40:1/1.15:1	0.3	5.0	PD4-2
PD4-2-4-30	2.0-4.0	0.6	20	1.35:1/1.35:1	0.3	6.0	PD4-7
PD4-3.4-4.2-30	3.4-4.2	0.5	22	1.20:1/1.15:1	0.3	3.0	PD4-7
PD4-4-8-30	4.0-8.0	0.5	20	1.45:1/1.35:1	0.3	6.0	PD4-7
PD4-7-12.4-30	7.0-12.4	1	16	1.70:1/1.70:1	0.8	10.0	PD4-7
PD4-8-12.4-30	8.0-12.4	0.8	18	1.45:1/1.35:1	0.4	6.0	PD4-7
PD4-12-18-30	12.0-18.0	1.5	18	1.50:1/1.40:1	0.5	6.0	PD4-7
PD4-8-18-30	8.0-18.0	1	16	1.60:1/1.50:1	0.3	7.0	PD4-7
PD4-1.5-3-30	1.5-3.0	0.9	16	1.50:1/1.45:1	0.2	5.0	PD4-6
PD4-0.5-2.5-30	0.5-2.5	0.7	20	1.40:1/1.25:1	0.3	4.0	PD4-2
PD4-1-3-30	1.0-3.0	0.9	18	1.45:1/1.35:1	0.4	6.0	PD4-6
PD4-1-4-30	1.0-4.0	0.6	18	1.35:1/1.25:1	0.3	6.0	PD4-6
PD4-2-8-30	2.0-8.0	0.9	18	1.45:1/1.35:1	0.4	6.0	PD4-4
PD4-2-12-20	2.0-12.0	1.9	17	1.50:1/1.50:1	0.4	5.0	PD4-7
PD4-1-8-10	1.0-8.0	2.4	17	1.50:1/1.40:1	0.35	6.0	PD4-10
PD4-0.4-2.7-20	0.4-2.7	2.3	17	1.50:1/1.40:1	0.3	5.0	PD4-10
PD4-2-18-30	2.0-18.0	2.5	18	1.60:1/1.45:1	0.8	10.0	PD4-4
PD4-6-18-30	6.0-18.0	2.5	18	1.60:1/1.45:1	0.8	10.0	PD4-4
PD4-0.3-3-10	0.3-3.0	1.5	19	1.40:1/1.40:1	0.5	10.0	PD4-11
PD4-0.4-6-10	0.4-6.0	1.5	19	1.40:1/1.40:1	0.5	10.0	PD4-10
PD4-0.5-18-10	0.5-18.0	6.5	18	1.70:1/1.50:1	1.4	18.0	PD4-10

- Custom Design for Higher Isolation Available. Contact Manufacturer For Other Specifications
- Power divider rating 30 watts max for load better than 1.2:1
- Standard connector is SMA female and add suffix for specific (N : N female, T: TNC female, B: BNC female)



OUTLINE	CONN.	A		B		C		D		E		F		G		H	
		Inch.	mm.	Inch.	mm.	Inch.	mm.	Inch.	mm.	Inch.	mm.	Inch.	mm.	Inch.	mm.	Inch.	mm.
PD4-1	SMA	3.10	78.7	3.70	94	.50	12.7	.50	12.7	.70	17.8	2.85	72.4	.125	3.2	.125	3.20
PD4-2	SMA	3.60	91.4	3.40	86.4	.51	13.0	.75	19.1	.67	17	3.35	85.1	.125	3.2	.125	3.20
PD4-4	SMA	2.80	71.1	2.00	50.8	.51	10.2	.40	10.2	.67	17	2.55	64.8	.125	3.2	.125	3.20
PD4-5	SMA	2.30	58.4	1.54	39.1	.40	10.2	.40	10.2	.50	12.7	2.06	52.3	.110	2.8	.120	3.05
PD4-6	SMA	2.63	66.8	2.90	73.7	.51	10.2	.55	14	.51	13	2.38	60.5	.125	3.2	.125	3.20
PD4-7	SMA	2.23	56.6	2.15	54.6	.51	13.0	.35	8.9	.51	13	1.98	50.3	.125	3.2	.125	3.20
PD4-8	SMA	1.98	50.3	1.46	37.8	.40	10.2	.24	6.1	.50	12.7	1.73	43.9	.125	3.2	.125	3.20
PD4-9	SMA	2.60	66.0	5.45	138.4	.40	10.2	.55	14	.50	12.7	2.30	58.4	.150	3.8	.150	3.80
PD4-10	SMA	2.95	74.9	6.25	158.8	.40	10.2	.25	6.4	.50	12.7	2.70	68.6	.150	3.8	.125	3.20
PD4-11	SMA	4.00	101.6	5.30	134.6	.50	12.7	.50	12.7	1.00	25.4	3.70	94.0	.150	3.8	.150	3.80