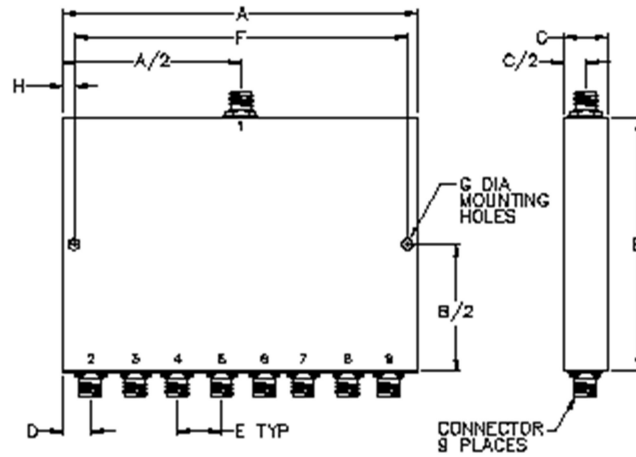


POWER DIVIDERS: 8 WAYS

MODEL NUMBER	FREQUENCY RANGE (GHz)	INSERTION LOSS (dB Max.)	ISOLATION (dB Min.)	VSWR (dB MAX.)	AMP. BALANCE +/- dB Max.	PHASE BALANCE +/- Degrees Max.	OUTLINE NUMBER
PD8-0.5-1-30	0.5-1.0	0.7	18	1.35:1/1.30:1	0.35	9	PD8-1
PD8-1-2-30	1.00-2.00	0.8	18	1.45:1/1.35:1	0.35	6	PD8-1
PD8-2-4-30	2.0-4.0	1.2	18	1.45:1/1.35:1	0.35	9	PD8-2
PD8-5.8-6.4-30	5.8-6.4	0.9	19	1.40:1/1.30:1	0.4	8	PD8-2
PD8-2-8-30	2.0-8.0	1.2	17	1.60:1/1.60:1	0.7	10	PD8-4
PD8-4-8-30	4.0-8.0	1.2	17	1.60:1/1.60:1	0.6	10	PD8-4
PD8-8-12.5-30	8.0-12.4	1.3	16	1.70:1/1.70:1	0.5	8	PD8-4
PD8-6-18-30	6.0-18.0	2.2	15	1.80:1/1.70:1	0.5	8	PD8-2
PD8-12-18-30	12.0-18.0	2.2	15	1.80:1/1.70:1	0.5	15	PD8-2
PD8-2-18-30	2.0-18.0	3.8	15	1.80:1/1.80:1	0.8	18	PD8-3
PD8-0.5-18-30	0.5-18.0	6.8	16	1.60:1/1.45:1	1.2	18	PD8-5
PD8-3.62-4.25-30	3.62-4.25	0.7	19	1.35:1/1.30:1	0.3	5	PD8-2
PD8-5.8-6.4-30	5.8-6.4	0.6	18	1.35:1/1.20:1	0.5	8	PD8-2
PD8-8-11-30	8.0-11.0	0.7	20	1.35:1/1.25:1	0.4	8	PD8-4
PD8-0.5-2.5-30	0.5-2.5	1.4	16	1.60:1/1.55:1	0.4	7	PD8-1
PD8-7-12.5-30	7.0-12.5	2	16	1.70:1/1.70:1	±0.5	8	PD8-3
PD8-2-6-30	2.0-6.0	1.2	17	1.50:1/1.40:1	0.4	8	PD8-3
PD8-0.8-2-30	0.8-2.0	0.8	17	1.45:1/1.35:1	0.35	8	PD8-1
PD8-0.5-2-30	0.5-2.0	1.5	20	1.45:1/1.45:1	0.8	8	PD8-1
PD8-3.4-4.2-30	3.4-4.20	0.9	19	1.40:1/1.30:1	0.4	6	PD8-2
PD8-0.4-6-30	0.4-6.0	1.5	18	1.50:1/1.40:1	0.4	4	PD8-5

- Custom Design for Higher Isolation Available. Contact Manufacturer For Other Specifications
- Power divider rating 30 watts max for load better than 1.2:1
- Standard connector is SMA female and add suffix for specific (N : N female, T: TNC female, B: BNC female)



OUTLINE	CONN.	A		B		C		D		E		F		G		H	
		Inch.	mm.	Inch.	mm.	Inch.	mm.	Inch.	mm.	Inch.	mm.	Inch.	mm.	Inch.	mm.	Inch.	mm.
PD8-1	SMA	4.50	114.3	3.00	76.2	.40	10.2	.50	12.7	.50	12.7	4.00	101.6	.125	3.2	.250	6.4
PD8-2	SMA	4.10	104.1	2.2	54.6	.40	10.2	.30	7.6	.50	12.7	3.75	95.6	.125	3.2	.175	4.4
PD8-3	SMA	4.00	101.6	3.7	94	.40	10.2	.25	6.4	.50	12.7	3.50	88.9	.125	3.2	.250	6.4
PD8-4	SMA	4.00	101.6	2	50.8	.40	10.2	.25	6.4	.50	12.7	3.75	95.3	.150	3.8	.175	4.4
PD8-5	SMA	5.00	127	7.5	190.5	.40	10.2	.25	6.4	.50	12.7	4.70	119.4	.150	3.8	.150	3.8
PD8-6	SMA	4.00	101.6	2.3	57.2	.50	12.7	.25	6.4	.50	12.7	3.75	95.3	.150	3.8	.125	3.2
PD8-7	SMA	4.75	120.7	3.2	81.3	.52	13.2	.25	6.4	.60	15.2	4.45	113	.125	3.2	.150	3.8