

Technical specifications

Absorptive SP8T switch box, DC-3GHz, 10W, SMAf

P/N: SP8TA-3G-1W-Sf-C

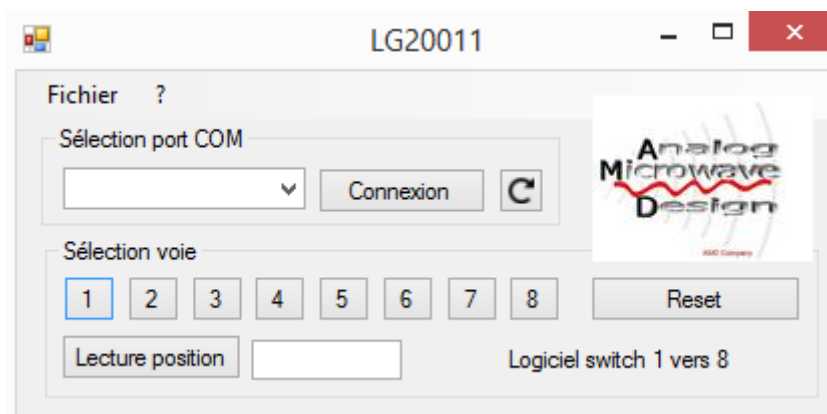
Electrical specifications	Measurement conditions	Specifications			
		Min.	Typ.	Max.	Unités Units
Frequency range	-	DC		3000	MHz
Insertion Loss	DC-3000 MHz		0.8	1.5	dB
Isolation	DC-1000 MHz	70	80		dB
	2000-3000MHz	40	50		dB
VSWR	DC-1000MHz		1.20 :1	1.30 :1	-
	2000-3000 MHz		1.25 :1	1.6 :1	-
Total power rating	CW			10	W
On/Off time	10-90%		10	20	ms
Power supply	50-60 Hz	110		230	V AC
Mechanical features					
Mechanical features	Measurement conditions	Specifications			
Length x width x height	L x W x H	200 x 240 x 90			mm
RF Connectors	Front panel	9 x SMA f			-
Control connector	Front panel	USB-B			-
Supply connector	Rear panel	IEC			-
Environmental conditions					
Environmental conditions	Measurement conditions	Specifications			Unités Units
Température de service Operating temperature		Min.	Typ.	Max.	
		-20		+55	°C
Température de stockage Storage temperature		-45		+85	°C

Ind.	Par	Le	Observation
0	Allamando	02/12/2013	Preliminary
1	Allamando	12/03/2014	Final specification
2	Gautier	18/12/2020	Update

Outline view



Software interface



Windows software part number LG20011

Labview VI software part number LOG14008

Ind.	Par	Le	Observation
0	Allamando	02/12/2013	Preliminary
1	Allamando	12/03/2014	Final specification
2	Gautier	18/12/2020	Update